



TK International
020 7794 8700
www.t-k.co.uk

Residential Sales
Residential Lettings
Property Management

Sales Office:
9 Heath Street
Hampstead
London NW3 6TP
E: sales@t-k.co.uk

Lettings Office:
16-18 Heath Street
Hampstead
London NW3 6TE
E: lettings@t-k.co.uk

 tk.international
 TK International
 TK International

Est.
1998



Golders Park Close Golders Hill Park NW11

An exceptionally well-presented, modern five-bedroom semi-detached townhouse, ideally situated in this sought-after close adjacent to the highly regarded Golders Hill Park.

Built approximately 15 years ago as part of a desirable boutique development, the property was constructed to a high specification and incorporates a range of bespoke finishes throughout. The flexible family accommodation is arranged over four floors, designed to maximise natural light and provide well-balanced, generously proportioned living spaces.

The ground floor is entered via a spacious entrance hall leading to an impressive 23'5" main reception room. This level also offers a study/fifth bedroom and a guest cloakroom with shower.

The first floor comprises three well-proportioned bedrooms and a family bathroom, while the entire second floor is dedicated to the principal bedroom suite, featuring a dressing area and a stylish en-suite bathroom.

On the garden level is a large, custom-fitted kitchen/breakfast room, complemented by a substantial family/cinema room and an additional guest cloakroom, providing excellent space for both everyday living and entertaining.

Further benefits include underfloor heating, solar panels and other energy-efficient technologies, a delightful rear garden, and secure off-street parking for two cars. Golders Green Underground Station (Northern Line), along with its extensive shops, restaurants and transport links, is within a five-minute walk.

£3,350,000

SOLE AGENT

Freehold



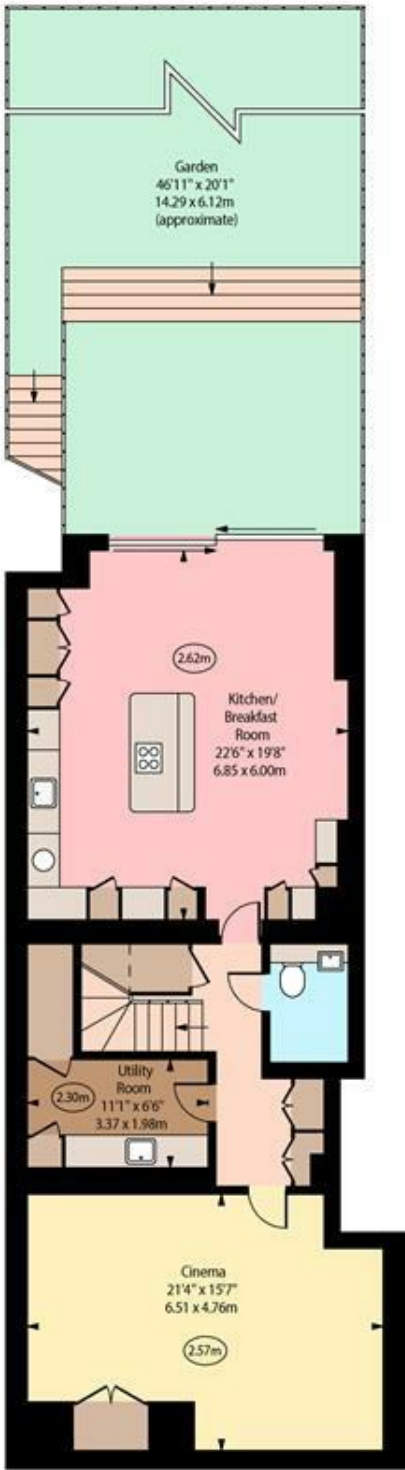




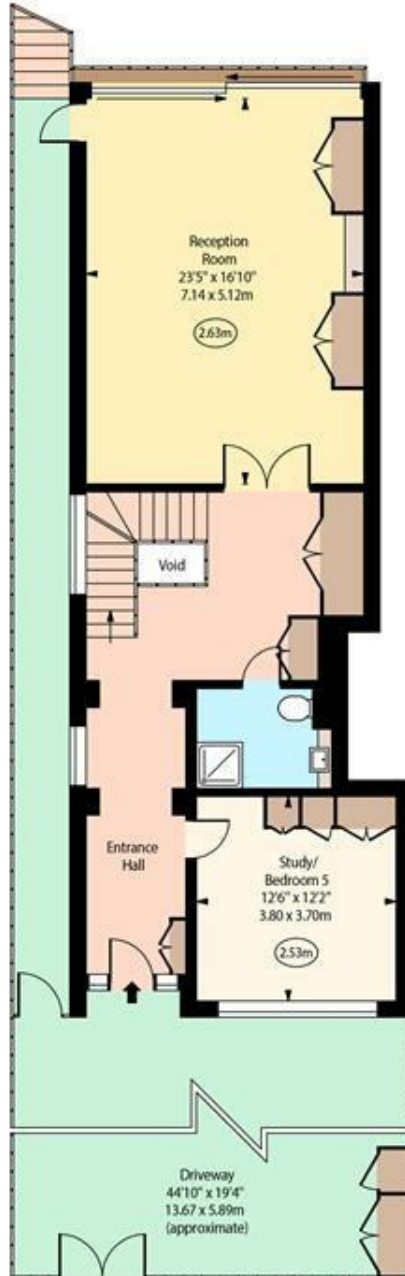
Golders Park Close, NW11



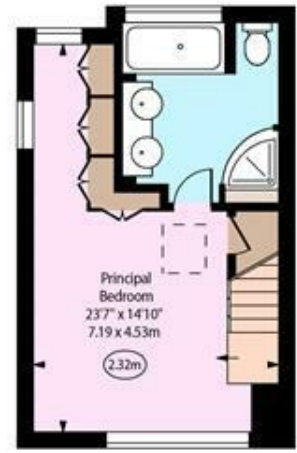
○ - Ceiling Height



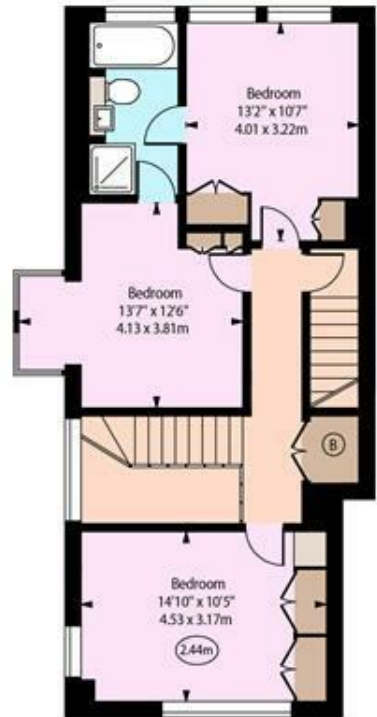
Garden Level



Ground Floor



Second Floor



First Floor

Approx Gross Internal Area 3020 Sq Ft - 280.56 Sq M

Every attempt has been made to ensure the accuracy of the floor plan shown. However, all measurements, fixtures, fittings, and data shown are approximate interpretations and for illustrative purposes only. Measured according to the RICS. Not To Scale.
www.golders.co.uk
Prepared for TK International
Ref. No. 030181W1